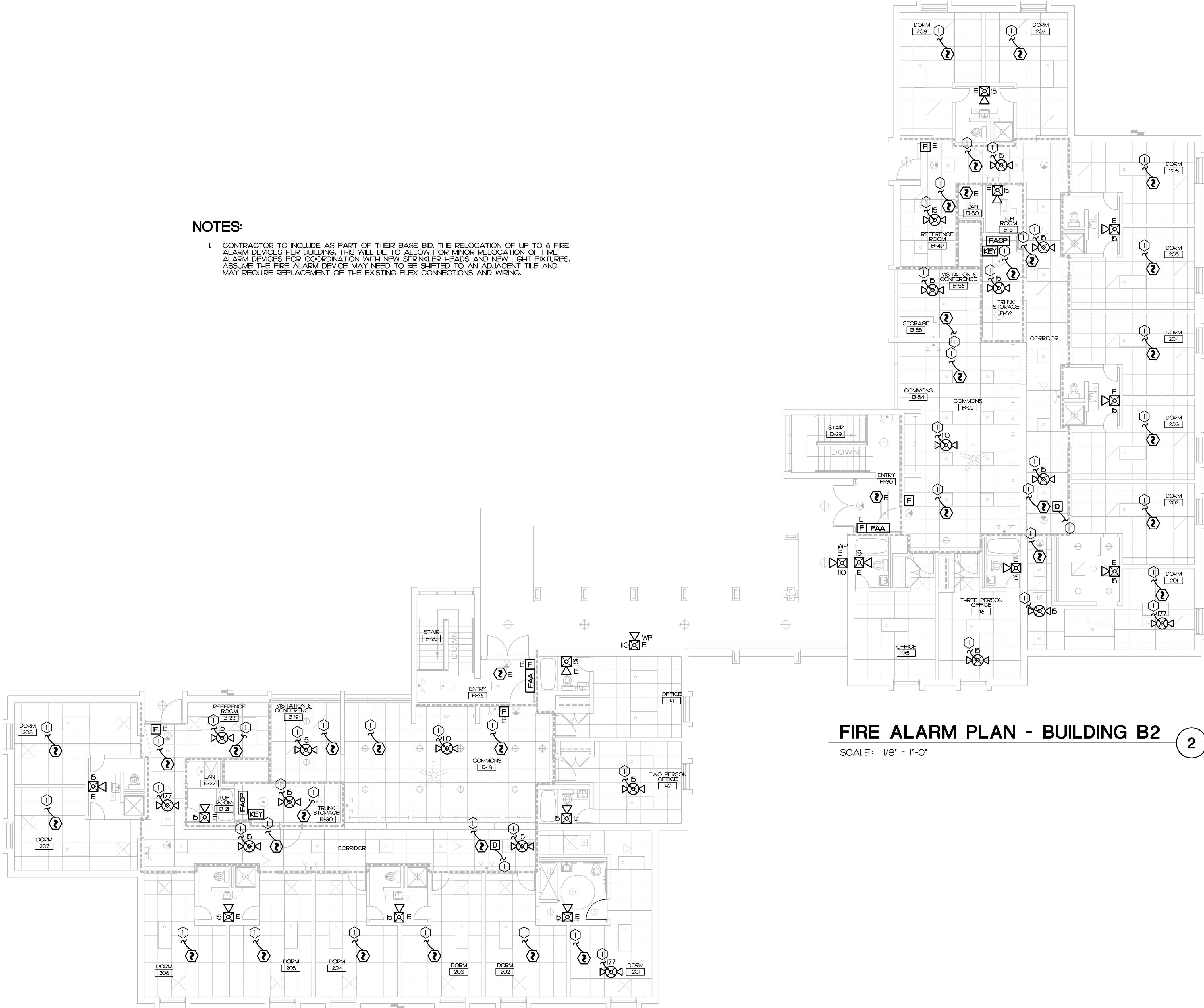


KEY NOTES

1 EXISTING FIRE ALARM DEVICE TO BE REINSTALLED INTO THE NEW CEILING.

NOTES:

1. CONTRACTOR TO INCLUDE AS PART OF THEIR BASE BID, THE RELOCATION OF UP TO 6 FIRE ALARM DEVICES PER BUILDING. THIS WILL BE TO ALLOW FOR MINOR RELOCATION OF FIRE ALARM DEVICES FOR COORDINATION WITH NEW SPRINKLER HEADS AND NEW LIGHT FIXTURES. ASSUME THE FIRE ALARM DEVICE MAY NEED TO BE SHIFTED TO AN ADJACENT TILE AND MAY REQUIRE REPLACEMENT OF THE EXISTING FLEX CONNECTIONS AND WIRING.



FIRE ALARM PLAN - BUILDING A2

SCALE: 1/8" = 1'-0"

1

FIRE ALARM PLAN - BUILDING B2

SCALE: 1/8" = 1'-0"

2

IMEG
3221 BLUE RIDGE ROAD, STE 113
RALEIGH, NC 27612
P: 919.571.1111
www.imegcorp.com

IMEG RESERVES PROPRIETARY RIGHTS, INCLUDING COPYRIGHTS, TO THIS DRAWING AND THE DATA SHOWN THEREON. SAID DRAWING AND/OR DATA ARE THE EXCLUSIVE PROPERTY OF IMEG AND SHALL NOT BE USED OR REPRODUCED FOR ANY OTHER PROJECT WITHOUT THE EXPRESS WRITTEN APPROVAL AND PARTICIPATION OF IMEG.
©2024 IMEG CONSULTANTS CORP.
North Carolina Design Registration #F-1507
PROJECT # 24048

0 1 2 3
FEET, SCALE IN INCHES

REVISIONS		5/27/25
NO.	DESCRIPTION	DATE

ATLANTEC
ENGINEERS, PA
IMEG
3221 BLUE RIDGE ROAD, SUITE 113
RALEIGH, NC 27612
P: 919.571.1111
24048

IMEG CONSULTANTS CORP.
No. F-1507
NORTH CAROLINA PROFESSIONAL ENGINEER
SEAL 17382
DAVID J. WHITNEY

PREPARED FOR:
NC DEPARTMENT
OF INSTRUCTION
SCO #
24-27792-01A

GOVERNOR MOREHEAD SCHOOL
SPRINKLER, ADA TOILET, LIGHTING
UPGRADES FOR DORMS A, B, + D
RALEIGH, NC

CONTENTS:
BUILDING A,B SECOND
FLOOR FIRE ALARM
PLAN

DATE:
May 27, 2025

DESIGNER: SWM
ENGINEER: DJW

SHEET NO.
F-102
OF